



BIOBLOC22

LIFT STATION
MAINTENANCE

BIOBLOC 22 CONTAINS SPECIALTY PENETRANTS AND SURFACTANTS THAT LOOSEN AND LIQUEFY HEAVY GREASE DEPOSITS, THEREBY ASSISTING IN THEIR BIODEGRADATION

TREATMENT WITH BIOBLOC 22 CAN:

- Keep floats clean;
- Reduce grease build-up headaches;
- Prevent emergency blockages;
- Save on line jettings;
- Lower grease disposal costs;
- Reduce odours.

HOW LONG WILL IT LAST?

Field experience has shown that in a pumping station with a flow of 500,000 gallons per day, BIOBLOC 22 should last 30 days.

APPLICATION INSTRUCTIONS

Add BIOBLOC 22 directly to the lift station.

When locating the BIOBLOC 22 in the sump, do not place BIOBLOC 22 directly into the flow of incoming wastes. The turbulence and "washing effect" will greatly reduce the longevity of this product. Ideally, BIOBLOC 22 should be placed in a less turbulent area of the sump, but not in a dead spot.

BIOBLOC 22 should be suspended in the sump so that it is always submerged in water, even at the lowest water level. This will assure maximum contact time with the organics providing superior results.

If a grease shelf is present during placement of BIOBLOC 22, it is recommended to raise the high level flow so that the bacteria can attack the grease shelf from the top, bottom and sides.

Results should be obtained in four to eight weeks from the time of application. If grease shelves are present at the time of application, a longer period of time may be required to obtain results.

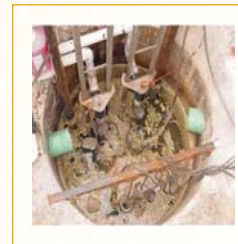
Pit Size	Maintenance
1,000 gallons	2 lb/month
5,000 gallons	5 lb/month
10,000 gallons	5 - 10 lb/month
20,000 gallons	10 lb/month

For further information about application contact your BIONETIX technical representative.

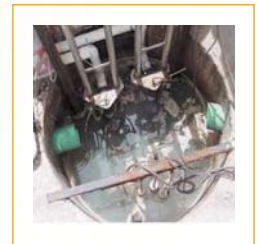
SPECIFICATIONS

Description	Solid pink block
Packaging	2 lb block in a mesh application bag, 4/case. 5 lb block in a mesh application bag, 2/case.
Nutrient Composition	Biological nutrients and stimulants
Bacteria Count	3 billion per gram.
Storage	DO NOT FREEZE! Store in a cool dry location. Do not inhale dusts. Avoid excessive skin contact. See MSDS.

PRODUCT TEST



BEFORE



AFTER

The information presented in this Product Sheet is believed to be reliable. This information is provided as representative only and there are no warranties, expressed or implied, regarding its performance. Since neither distributor nor manufacturer has any control over handling, storage, use and application conditions, they are not responsible for any claims, liabilities, damages, costs or expenses of any kind arising out of or in any way connected with the handling, storage or use of the product described.