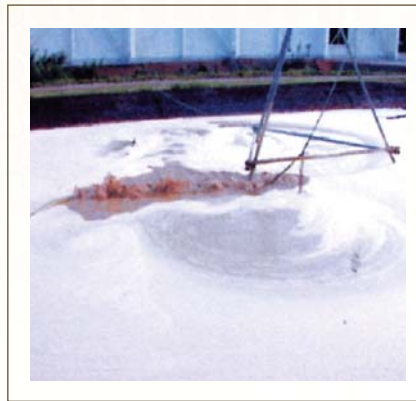


## CASE STUDY

# TREATMENT OF PROTEIN/ VEGETABLE OIL-BASED WASTE FROM A FOOD PROCESSING PLANT USING BCP22 AND STIMULUS (AUGUST 2004)

The food processing plant discharged material consisting of:  
50% Protein, 30% Vegetable Oil, 20% Water. Discharge quantity: 600 kg/day

### BEFORE ADDING BCP22 AND STIMULUS



After setting up the oxygen equipment, BCP22 and STIMULUS were added and left for 72 hours. The degradation of the protein and the carbonization of the vegetable oil were compared in the presence of oxygen supplementation.

# TREATMENT OF PROTEIN/VEGETABLE OIL-BASED WASTE FROM A FOOD PROCESSING PLANT USING BCP22 AND STIMULUS (AUGUST 2004)

**AFTER THE APPLICATION OF BCP22 AND STIMULUS,  
A CLEANSING FOAM APPEARED ON THE SURFACE**



*10 days after application: most of the foam disappeared.*



*14 days after application: there are some untreated materials due to the continuous discharge of waste.*